

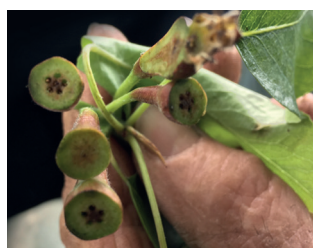
FrosTect

frost protection 2.0

Protection against
frost damage

Thanks to increasingly reliable weather forecasts and PHC FrosTect, it is possible to be one step ahead to prevent frost damage. PHC FrosTect can be applied to soft fruit, hard fruit and nursery plants and contains a.o. Harpine proteins. This protein helps new tissue and the ovary of fruit trees against frost damage.

The protein causes a reaction in the cells that increases the level of minerals. This prevents the formation of ice crystals and increases frost tolerance. The added calcium reduces the plant's reliance on mineral buffer. This increases the reliability even further. After the frost period, the proteins provide extra cell growth.



By treatment with FrosTect, the carpels are brown but the structure is not affected despite 6 degrees frost. It can also be seen that the marrow under the ovary is still intact.

By applying FrosTect, the pears have grown to a coarse size in combination with the use of PreTect and OPF during the growing period.

Conference pears treated with FrosTect.



THE PRODUCT BENEFITS

- Internal frost protection
- Natural effect
- Prevents structural damage in case of light/moderate frost
- Applicable in areas without sufficient suitable water
- Affordable and effective for stone fruit varieties
- Easily applicable to all crops

USE IN COMBINATION WITH OTHER (PHC) PRODUCTS

FrosTect can be used with all PHC products.

Application of PreTect, OPF and Fulvic 25 in the period after the frost enhance the effect of FrosTect.

Packaging, transport & storage

FrosTect is packed in a 2 kg bag. Store dry, airtight, frost-free and out of direct sunlight. Opened packages have a limited shelf life, resealing the bag extends the shelf life.

p.t.o.



We Grow Soil.

Health and safety information

Not intended for ingestion. Wash your hands after use. Wear protective clothing and respiratory protection (equipped with a P3 dust filter) when mixing this product. In case of an accident or if you feel unwell, consult a doctor (if possible, show this label). KEEP OUT OF REACH OF CHILDREN

Product licenses

Labeled according to EC (VO) 2003/2003:EC-G4 limestone fertilizer. Neutralizing value: 55.

INGREDIENTS

Micronised calcite	53,67 %
Fulvic Dry	30 %
Trace elements	11,20 %
Polyethylene glycol	1,50 %
Harpin protein	0,15 %

DOSAGE

Fruit cultivation	1,5 kg/ha (250/1000 liter/ha)
Fruit cultivation (structural repetition)	1 kg/ha (250/1000 liter/ha)
Other crops	1,5-2 kg/ha (250/1000 liter/ha)

ADDITIONAL INFORMATION

- Dissolve in (chlorine-free) water with a pH between 5 -10.
- Leave for 15-30 minutes and stir before use.
- Spray the prepared product within 4 - 6 hours.
- Use water with a temperature of at least 10°C.
- Spray 2 days before frost. FrosTect gives protection until about 5 days after application.
- Spray over the entire crop surface.
- Allow at least 2 hours drying time after application.
- Consult your PHC cultivation consultant for tailored advice.

WARRANTY

Plant Health Cure sells the product PHC Injectable. Follow the instructions on the packaging carefully when using the product. We do not guarantee the suitability of the product outside the originally intended application. Plant Health Cure is only obliged to replace products that do not meet the specifications. Suggestions for usage and information on results from the use of the product, obtained from the manufacturer, can be considered reliable. Because Plant Health Cure cannot oversee the conditions of use, the buyer/user is responsible for all results, including injury or damage caused by using the product alone or in combination with other materials. Keep out of reach of children.

The latest version of the datasheet can always be found on www.phc.eu